

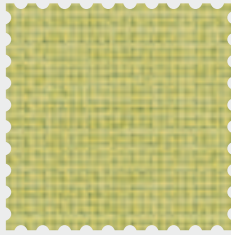


Standard materialer og farger *Standard materials and colours*

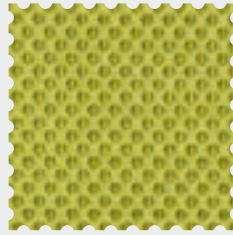
Office seating

# COLOURS





**Fame 158**  
Gabriel A/S, 68038  
Lime



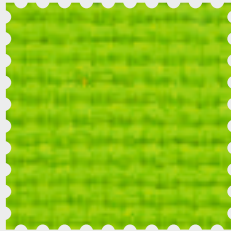
**Runner 578**  
Gabriel A/S, 68056  
Lime



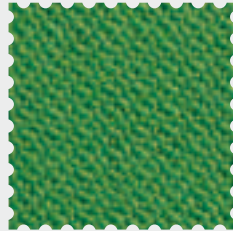
**Classica 236**  
Dinamica, 9563  
Green



**Europost2 303**  
Gabriel A/S, 68128  
Green



**Laser J 325**  
Fidivi, 7025  
Lime



**Oxygen 140**  
Camira Fabrics, Relax BA008  
Green



**Laser J 326**  
Fidivi, 7014  
Green



**Laser J 323**  
Fidivi, 8006  
Beige



**Step Melange 424**  
Gabriel A/S, 68119  
Green Melange



**Europost2 302**  
Gabriel A/S, 62061  
Yellow



**Fame 155**  
Gabriel A/S, 60033  
Light Grey



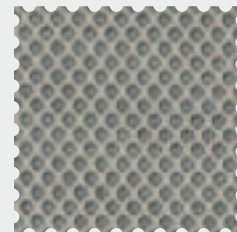
**Heidal 292**  
GU, 120  
Light Grey Melange



**Step Melange 422**  
Gabriel A/S, 60004  
Light Grey Melange



**Luna2 404**  
Gabriel A/S, 4013  
Light Grey Melange



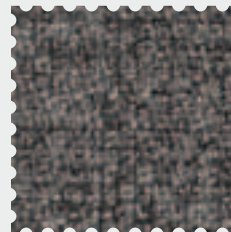
**Runner 570**  
Gabriel A/S, 60011  
Light Grey



**Luna2 405**  
Gabriel A/S, 4009  
Grey Melange



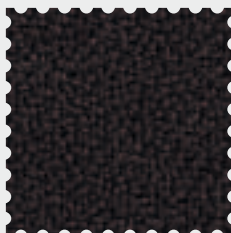
**Classica 231**  
Dinamica, 9189  
Grey



**Step Melange 423**  
Gabriel A/S, 60011  
Grey Melange



**Luna2 406**  
Gabriel A/S, 4012  
Dark Grey Melange



**Xtreme Plus 220**  
Camira Fabrics, Sombrero YS046  
Grey



**Xtreme Plus 222**  
Camira Fabrics, Havana YS009  
Black



**Oxygen 141**  
Camira Fabrics, Inhale BA001  
Black




**Fame 161**  
Gabriel A/S, 60999  
Black






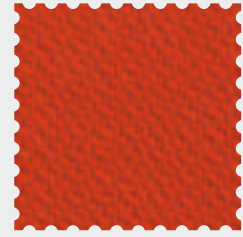
**Runner 574**  
Gabriel A/S, 63034  
Orange



**Europost2 310**  
Gabriel A/S, 63016  
Orange 




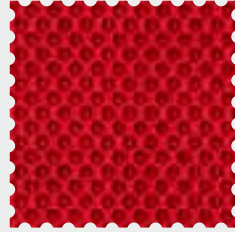
**Fame 156**  
Gabriel A/S, 63016  
Orange 



**Oxygen 149**  
Camira Fabrics, Yarrow BA034  
Orange




**Europost2 308**  
Gabriel A/S, 64070  
Red 



**Runner 575**  
Gabriel A/S, 64089  
Red



**Fame 153**  
Gabriel A/S, 64089  
Red 




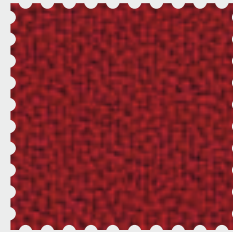
**Oxygen 148**  
Camira Fabrics, Liberty BA030  
Red



**Classica 233**  
Dinamica, 9232  
Red



**Europost2 309**  
Gabriel A/S, 64068  
Dark red 



**Xtreme Plus 221**  
Camira Fabrics, Calypso YS106  
Red




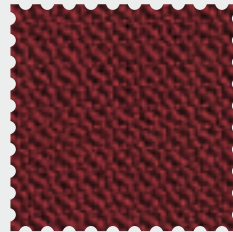
**Laser J 321**  
Fidivi, 4024  
Cerise



**Laser J 320**  
Fidivi, 4011  
Red




**Luna2 403**  
Gabriel A/S, 4413  
Red Melange 




**Oxygen 147**  
Camira Fabrics, Aloe BA020  
Dark Red



**Luna2 401**  
Gabriel A/S, 4411  
Soft Pink Melange 




**Europost2 307**  
Gabriel A/S, 65069  
Lilac 




**Laser J 324**  
Fidivi, 5003  
Lilac




**Fame 160**  
Gabriel A/S, 65012  
Lilac 



**Elmosoft 502**  
Elmo Leather AB  
White 



**Elmosoft 501**  
Elmo Leather AB  
Black 





**Runner 572**  
Gabriel A/S, 60061  
White



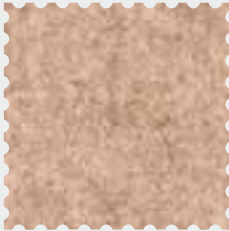
**Heidal 294**  
GU, 220  
Light Beige Melange



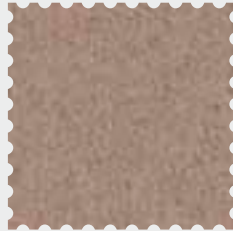
**Laser J 322**  
Fidivi, 1049  
White



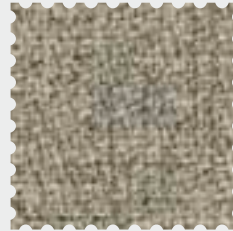
**Luna2 402**  
Gabriel A/S, 4006  
Light Beige Melange



**Luna2 407**  
Gabriel A/S, 4101  
Beige Melange



**Europost2 300**  
Gabriel A/S, 61003  
Beige



**Step Melange 420**  
Gabriel A/S, 61104  
Beige Melange



**Europost2 301**  
Gabriel A/S, 61004  
Brown



**Heidal 293**  
GU, 370  
Brown Melange



**Step Melange 421**  
Gabriel A/S, 61103  
Brown Melange



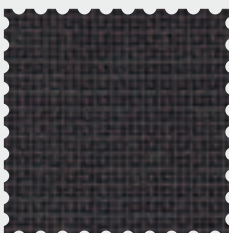
**Classica 232**  
Dinamica, 9064  
Brown



**Oxygen 144**  
Camira Fabrics, Cirrus BA015  
Brown



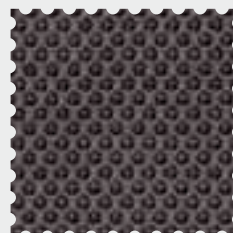
**Oxygen 145**  
Camira Fabrics, Karma BA004  
Light Grey



**Fame 165**  
Gabriel A/S, 60019  
Grey



**Fame 163**  
Gabriel A/S, 60051  
Grey



**Runner 571**  
Gabriel A/S, 60025  
Grey



**Oxygen 142**  
Camira Fabrics, Tranquil BA005  
Grey



**Heidal 291**  
GU, 190  
Koks



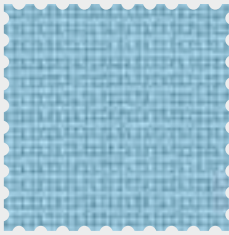
**Laser J 328**  
Fidivi, 8017  
Dark Grey



**Runner 573**  
Gabriel A/S, 60999  
Black



**Classica 230**  
Dinamica, 9059  
Black



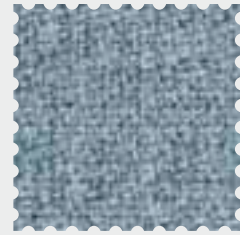
**Fame 159**  
Gabriel A/S, 66047  
Light Blue



**Europost2 305**  
Gabriel A/S, 66118  
Light Blue



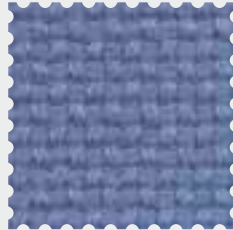
**Europost2 304**  
Gabriel A/S, 66115,  
Blue



**Step Melange 425**  
Gabriel A/S, 67004  
Light Blue Melange



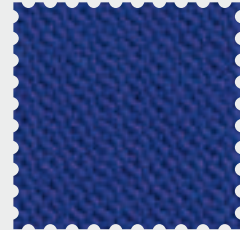
**Step Melange 426**  
Gabriel A/S, 66018  
Blue Melange



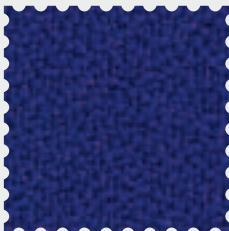
**Laser J 327**  
Gabriel A/S, 6020  
Blue



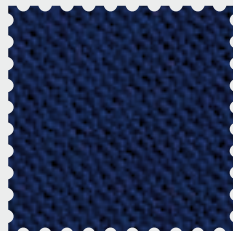
**Classica 234**  
Dinamica, 8426  
Blue



**Oxygen 146**  
Camira Fabrics, Serene BA021  
Blue



**Xtreme Plus 223**  
Camira Fabrics, Ocean YS100  
Blue



**Oxygen 143**  
Camira Fabrics, Cleanse BA002  
Dark Blue



**Fame 154**  
Gabriel A/S, 66071  
Blue



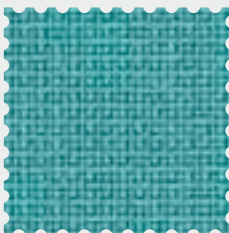
**Runner 577**  
Gabriel A/S, 66064  
Dark Blue



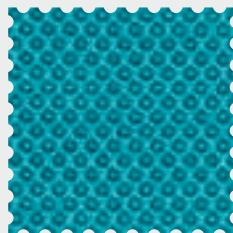
**Fame 162**  
Gabriel A/S, 66061  
Navy



**Classica 235**  
Dinamica, 9279  
Navy



**Fame 157**  
Gabriel A/S, 67059  
Turquoise



**Runner 576**  
Gabriel A/S, 66063  
Light Blue



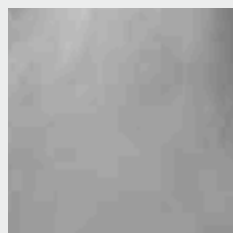
**Europost2 306**  
Gabriel A/S, 67066  
Turquoise



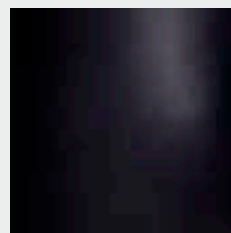
**Luna2 408**  
Gabriel A/S, 4704  
Turquoise Melange



**White (Savo Invite)**  
RAL 9010



**Polished aluminium**



**Black**  
RAL 9005

## Classica

Produsent: Dinamica.  
Bredde: 142 cm.  
Materiale: 88 % polyester/12 % polyurethan.  
Slitestyrke:  $\geq$ 116.000 Martindale,  
ISO 12947-1-2-3-4.  
Flammesikring: BS 5852 P1 0 Sigarett  
California 117.  
Rengjøring: 60° C.  
Miljømerking: Øko tex 100.

*Producer: Dinamica.*  
*Width: 142 cm.*  
*Composition: 88 % polyester/  
12 % polyurethan.*  
*Abrasion resistance:  $\geq$ 116.000 Martindale,  
ISO 12947-1-2-3-4.*  
*Flammability: BS 5852 P1 0 Cigarette,  
California 117.*  
*Cleaning: 60° C.*  
*Ecolabel: Øko tex 100.*

## Elmosoft

Produsent: Elmo Leather AB.  
Lysekthet: 6.  
Gnielkthet: Våt 80/4, Tørr 2000/4, Fuktig  
50/4, ISO 11640.  
Flammesikring: EN 1021-1: 1-2 (sigarett/fyrstikk),  
ISO 8191 I&II, California 117, BS 5852 Crib  
5, IMO A652 (16).  
Overflatestyrke: 2 N/CM – EN ISO 11644.  
Rivestyrke: 20 N DIN 53329- A.  
Miljømerking: Øko tex

*Producer: Elmo Leather AB.*  
*Lightfastness: 6.*  
*Rubbing: Wet 80/4, Dry 2000/4, Sweat  
50/4, ISO 11640.*  
*Flammability: EN 1021-1: 1-2 (cigarette/  
match), ISO 8191 I&II, California 117, BS  
5852 Crib 5, IMO A652 (16).*  
*Finish-adhesion: 2 N/CM - ISO 11644.*  
*Tear strength: 20 N DIN 53329- A.*  
*Ecolabel: Øko tex*

## Europost2

Produsent: Gabriel A/S  
Bredde: 140 cm  
Materiale: 100 % ull  
Slitestyrke: 50.000 Martindale  
(EN ISO 12947-2)  
Flammesikring: BS EN 1021-1 1&2, BS 5852  
Part 1 0, 1 sigarett & fyrstikk  
Rengjøring: Våt og Tørr Crocking  
Miljømerking: EU blomsten, Øko tex, Wools  
of Zealand, Flammehemmende, Fri for  
tungmetaller

*Producer: Gabriel A/S*  
*Width: 140 cm*  
*Composition: 100 % pure new wool*  
*Abrasion resistance: 50.000 Martindale  
(EN ISO 12947-2)*  
*Flammability: BS EN 1021-1 1&2 BS 5852 Part  
1 0, 1 cigarette/match*  
*Cleaning: Wet and Dry Crocking*  
*Ecolabel: EU flower, Øko tex, Wools of  
Zealand, Flame retardant, No heavy metal*

## Fame

Produsent: Gabriel A/S.  
Bredde: 140 cm.  
Materiale: 95 % ull/5 % polyamid.  
Slitestyrke:  $>$ 200.000 Martindale.  
Flammesikring: BS EN 1021 1&2, BS  
5852,Crib 5, Calif. Bull. 117E, UNI 9175  
Class 2.IM,  
AM 18 - NF D 60-013, BS 5852 Part 1 0,1  
Sigarett & fyrstikk, BS EN 1021 1&2, IMO  
A.652 (16), MED Certificate IMO.  
Tilfredsstiller også andre standarder. Flamme-  
sikringen avhenger av skumtype og flamme-  
hemmende behandling.  
Rengjøring: Rens.  
Miljømerking: EU blomsten, Øko tex, Wools  
of New Zealand, Flammehemmende, Fri for  
tungmetaller

*Producer: Gabriel A/S.*  
*Width: 140 cm.*  
*Composition: 95 % wool/5 % polyamid.*  
*Abrasion resistance:  $>$ 200.000 Martindale.*  
*Flammability: BS EN 1021 1&2, BS 5852,Crib  
5, Calif. Bull. 117E, UNI 9175 Class 2.IM,  
AM 18 - NF D 60-013, BS 5852 Part 1 0,1  
Cigarette & match, BS EN 1021 1&2, IMO  
A.652 (16), MED Certificate IMO.*  
*Will also pass other flammability standards.*  
*Flame retardant performance is dependent  
upon the foam used and fireproof treatment.*  
*Cleaning: Dry clean.*  
*Ecolabel: EU flower, Øko tex, Wools of New  
Zealand, Flame retardant, No heavy metal*

## Heidal

Produsent: Gudbrandsdalens Uldvarefabrik AS.  
Bredde: 150 cm.  
Materiale: 80 % ull/10 % polyamid/  
10 % viscose.  
Slitestyrke: 82.000 Martindale.  
Flammesikring: BS EN 1021-1 ISO 8191-1  
(sigarett), BS EN 1021-2 ISO 8191-2 (fyrstikk),  
IMO A652 (16).  
Rengjøring: Rens.

*Producer: Gudbrandsdalens Uldvarefabrik AS.*  
*Width: 150 cm.*  
*Composition: 80 % wool/10 % polyamid/  
10 % viscose.*  
*Abrasion resistance: 82.000 Martindale.*  
*Flammability: BS EN 1021-1 ISO 8191-1  
(cigarette), BS EN 1021-2 ISO 8191-2 (match),  
IMO A652 (16).*  
*Cleaning: Dry cleaning or with foam  
detergents.*

## Laser J

Produsent: Fidivi  
Bredde: 140 cm  
Materiale: 100 % polyester Trevira CS  
Slitestyrke: 100.000 Martindale (EN ISO  
12947-2)  
Flammesikring: BS EN 1021-1 ISO 8191-1  
sigarett, BS EN 1021-2 ISO 8191-1 fyrstikk,  
BS 7176 Medium Hazard, BS 5852, Crib 5  
Rengjøring: 60°C  
Miljømerking: Øko tex

*Producer: Fidivi*  
*Width: 140 cm*  
*Composition: 100 % polyester Trevira CS*  
*Abrasion resistance: 100.000 Martindale  
(EN ISO 12947-2)*  
*Flammability: BS EN 1021-1 ISO 8191-1  
cigarette, BS EN 1021-2 ISO 8191-1 match,  
BS 7176 Medium Hazard, BS 5852, Crib 5*  
*Cleaning: 60°C*  
*Ecolabel: Øko tex*

## Luna2

Produsent: Gabriel A/S  
Bredde: 140 cm  
Materiale: 90 % ull/10 % polyamid  
Slitestyrke: 70.000 Martindale (EN ISO 12947-2)  
Flammesikring: BS EN 1021-1 1& 2, BS 5852 Part 1 0, 1 sigarett/fyrstikk  
Rengjøring: Rens  
Miljømerking: EU blomsten, Øko tex, Wools of New Zealand, Flammehemmende, Fri for tungmetaller

Produsent: Gabriel A/S  
Width: 140 cm  
Composition: 90 % ull/10 % polyamide  
Abrasion resistance: 70.000 Martindale (EN ISO 12947-2)  
Flammability: BS EN 1021-1 1&2 BS 5852 Part 1 0, 1 cigarette/match  
Cleaning: Dry clean  
Ecolabel: EU flower, Øko tex, Wools of New Zealand, Flame retardant, No heavy metal

## Oxygen

Produsent: Camira Fabrics Ltd.  
Bredde: 140 cm.  
Materiale: 90 % ull/10 % nylon.  
Slitestyrke: 100.000 Martindale.  
Flammesikring: BS EN 1021-1 ISO 8191-1 (sigarett), BS EN 1021-2 ISO 8191-2 (fyrstikk), BS 7176:1995 Low Hazard.  
Rengjøring: Rens eller tørk rent med klut.  
Miljømerking: Second Nature climate neutral.

Produsent: Camira Fabrics Ltd.  
Width: 140 cm.  
Composition: 90 % wool/10 % nylon.  
Abrasion resistance: 100.000 Martindale.  
Flammability: BS EN 1021-1 ISO 8191-1 (cigarette), BS EN 1021-2 ISO 8191-2 (match), BS 7176:1995 Low Hazard.  
Cleaning: Vacuum regularly. Professionally dry clean or wipe clean with a damp cloth.  
Ecolabel: Second Nature climate neutral.

## Runner

Produsent: Gabriel A/S.  
Bredde: 160 cm.  
Materiale: 100 % polyester.  
Slitestyrke: 70.000 Martindale (EN ISO 12945-2).  
Flammesikring: BS EN 1021-2 Match Calif.  
Bull. 117E, BS EN 1021-1 sigarett.  
Rengjøring: Rens eller tørk rent med klut.  
Miljømerking: Øko tex 100.

Produsent: Gabriel A/S.  
Width: 160 cm.  
Composition: 100 % polyester.  
Abrasion resistance: 70.000 Martindale (EN ISO 12945-2).  
Flammability: BS EN 1021-2 Match Calif. Bull. 117E, BS EN 1021-1 (cigarette).  
Cleaning: Professionally dry clean or wipe clean with a damp cloth.  
Ecolabel: Øko tex 100.

## Step Melange

Produsent: Gabriel A/S  
Bredde: 140 cm  
Materiale: 100 % Trevira CS  
Slitestyrke: 100.000 Martindale (EN ISO 12947-2)  
Flammesikring: BS EN 1021-1 1&2, BS 5852 Part 1 0, 1 sigarett & fyrstikk  
Rengjøring: Våt og Tørr Crocking  
Miljømerking: EU blomsten, Øko tex, Flammehemmende, Fri for tungmetaller

Produsent: Gabriel A/S  
Width: 140 cm  
Composition: 100 % Trevira CS  
Abrasion resistance: 100.000 Martindale (EN ISO 12947-2)  
Flammability: BS EN 1021-1 1&2, BS 5852 Part 1 0, 1 cigarette/match  
Cleaning: Wet and Dry Crocking  
Ecolabel: EU flower, Øko tex, Flame retardant, No heavy metal

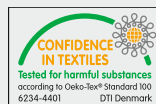
## Xtreme Plus

Produsent: Camira Fabrics Ltd.  
Bredde: 140 cm.  
Materiale: 100 % Xtreme FR.  
Slitestyrke: 100.000 Martindale.  
Flammesikring: EN 1021-1 (sigarett), EN 1021-2 (fyrstikk), BS 7176 Medium Hazard, BS 5852 Section 4 Crib 5.  
Rengjøring: 60° C.  
Miljømerking: Second Nature climate neutral.

Produsent: Camira Fabrics Ltd.  
Width: 140 cm.  
Composition: 100 % Xtreme FR.  
Abrasion resistance: 100.000 Martindale.  
Flammability: EN 1021-1 (cigarette), EN 1021-2 (match), BS 7176 Medium Hazard, BS 5852 Section 4 Crib 5.  
Cleaning: 60° C.  
Ecolabel: Second Nature climate neutral.



EU blomsten  
EU flower



Øko tex 100  
Øko tex 100



Flammehemmende  
Flame retardant



Fri for tungmetaller  
Free of heavy metals

Denne oversikten viser standardsortimentet. Andre stoffer/huder kan bestilles.

*This overview shows the standard assortment. Other fabrics/leather can be ordered.*

Av trykkt tekniske årsaker kan fargene i brosjyren avvike noe fra virkelig farge. Dersom du ønsker ekte fargeprøver kan du kontakte nærmeste salgskontor eller besøke en av våre utstillinger. Prislisten angir stoffer/farger tilgjengelig for de enkelte produkter.

*Due to the printing process, colours shown in this brochure may differ from actual colours. For accurate colour samples, please contact your local sales office or visit our showrooms. Local price lists specify the finishes available for individual products.*



Office seating

**Savo Norge** Grenseveien 99, 0663 Oslo, Postboks 6371, Etterstad 0604 Oslo  
Tel. 22 91 67 00 [savo@savo.no](mailto:savo@savo.no), [www.savo.no](http://www.savo.no)

**Savo Danmark** Islevdalvej 98, 1. sal, 2610 Rødovre  
Tel. 39 27 94 94 [savo@savo.dk](mailto:savo@savo.dk), [www.savo.dk](http://www.savo.dk)

**Savo Sverige** S:t Eriksgatan 58, 100 28 Stockholm  
Tel. 08-702 67 60 [info@savo.se](mailto:info@savo.se), [www.savo.se](http://www.savo.se)

**Savo United Kingdom** Building 3, Clearwater, Lingley Mere Business Park,  
Lingley Green Avenue, Great Sankey, Warrington WA5 3UZ  
Tel: 0845 071 0139 [sales@uk.savo.com](mailto:sales@uk.savo.com), [www.savo.com](http://www.savo.com)