



ERGOHUMAN ELITE G2



ERGOHUMAN ELITE G2 OVERVIEW

The Ergohuman Elite G2 office chair has been remastered with enhanced functionality and new elastomeric mesh upholstery.

Designed for office workers who need a comfortable chair for intensive use, its flex zones ensure continuous support for the back and lumbar region, while the adjustable armrests relieve pressure on wrists, arms, and shoulders. Additionally, the height-adjustable pivoting headrest helps reduce neck strain.

Engineered with a dual pivot mechanism which includes recline position locking, seat slide, forward synchro tilt seat, and seat height adjustment, Ergohuman Elite G2 also features an automatic lumbar support system with precise tension adjustment, adjustable arms, and an optional headrest. The Elite model can also be upgraded to a Plus version which includes a recline limiter function and additional aluminium detailing.

The Ergohuman Elite G2 boasts 97% recyclability, has Greenguard Gold Certification and meets BS 5459, and EN 1335-1 and -2. Available in a black or grey frame with a polished aluminium base and in a choice of mesh finishes. A range of optional accessories make this chair a high performance office chair.





ERGOHUMAN ELITE G2 FEATURES

FEATURES

- Dual pivot, synchro mechanism
- Right single lever for:
 - seat height (90 mm)
 - seat slide (50 mm)
 - lockable back tilt
- Left lever for forward seat tilt
- Recline tension control
- Back height adjustment (65 mm)
- Integrated lumbar support with tension control
- 5D adjustable armrests:
 - height, width, depth, angle and armpad tilt
- Waterfall seat front
- Polished aluminium base with 65 mm castors

OPTIONS

- Black or grey frame
- Adjustable headrest
- Fold-out footrest
- Pop-up coat hanger
- Plus upgrade with recline limiter and enhanced aluminium detailing



ERGOHUMAN ELITE G2 CREDENTIALS



CERTIFICATION

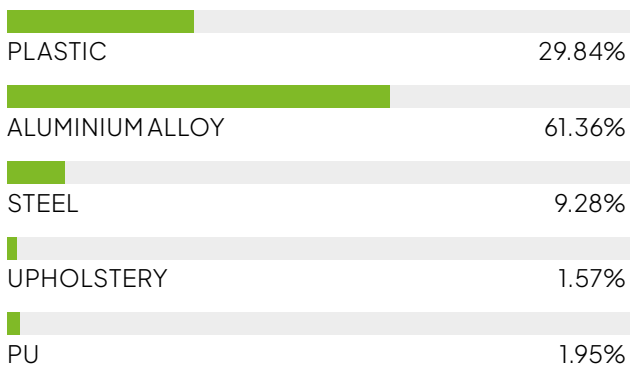
- BS 5459-2:2000 + A2:2008
- EN1335-1:2020
- EN1335-2:2018
- ANSI/BIFMA X5.1-2017
- GREENGUARD GOLD

Greenguard Certification Standards have established performance-based standards to define products and processes with low chemical and particle emissions for use indoors.

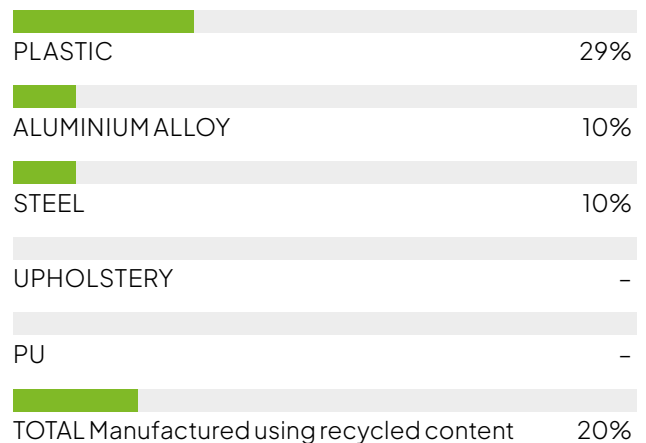
RECYCLABILITY



MATERIAL ANALYSIS



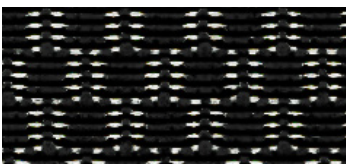
RECYCLED CONTENT



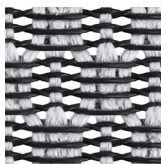


ERGOHUMAN ELITE G2 TEXTILES

T MESH



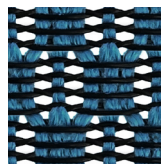
BLACK (STANDARD)
T-168-B1



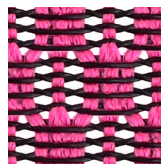
LIGHT GREY
T-168-B2



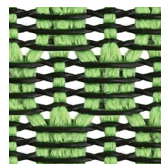
SCARLET
T-168-B3



COBALT
T-168-B4

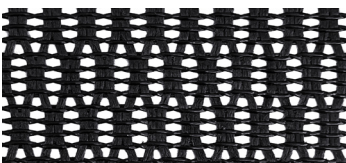


PINK
T-168-B5

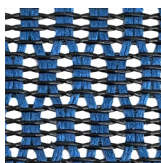


GREEN
T-168-B6

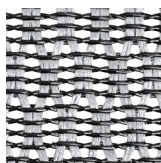
W MESH



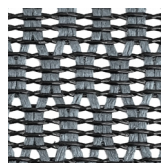
BLACK
W09-01



BLUE
W09-18



WHITE
W09-24



GREY
W09-53

Shown with Plus upgrade





The logo for COMFORTUK features the word 'COMFORTUK' in a bold, black, sans-serif font. The letter 'O' is stylized with a multi-colored gradient (yellow, orange, red, purple, blue, green) that transitions through the letters. The background of the page is composed of large, overlapping, curved shapes in teal, orange, yellow, red, and blue.

COMFORTUK HQ
Riverbank Mill
2 Stoneygate Road
Newmilns, Ayrshire
United Kingdom, KA16 9AJ

T+44 (0)1560 324 446
Ehello@comfort.global