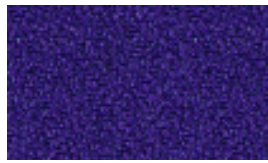


# Xtreme<sup>plus</sup>

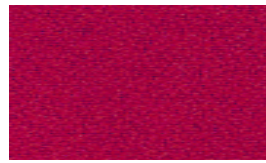
- made from 100% Recycled Polyester



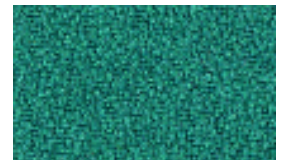
Tarot YS084



Tobago YS030



Panama YS079



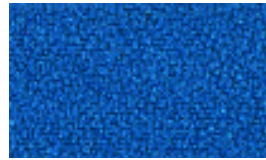
Windjammer YS047



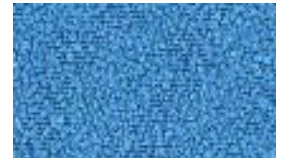
Havana YS009



Costa YS026



Curacao YS005



Martinique YS004

## 24/7+



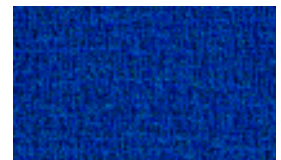
Night WK012



Forever WK017



Hour WK001



Perpetual WK013

## Vintage



Seraph VIN01



Arnage VIN04



Corniche VIN03



Connaught VIN07



Silver Shadow VIN02



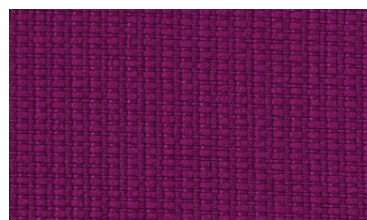
Continental VIN05

## Urban<sup>plus</sup>

- made from 100% Recycled Polyester



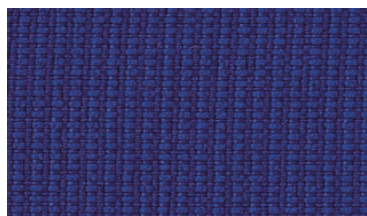
Grafitti YN204



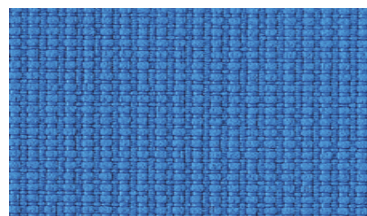
Freeway YN211



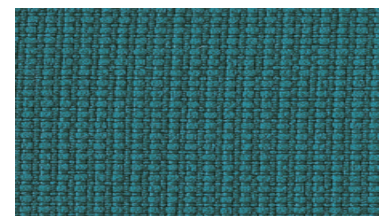
Bench YN091



Conurbation YN082



Penthouse YN202



Boulevard YN160

## KAB// Storm



## Xtreme<sup>plus</sup>

Composition:	100% Recycled Polyester FR
Weight:	310g/m <sup>2</sup> ±5% (435g/lin.m. ±5%)
Abrasion Resistance:	100,000 cycles (800g / 12Kpa) Martindale
Flammability:	BS EN 1021 - 1 :2006 (cigarette) BS EN 1021 - 2 : 2006 (match) BS 7176 : 2007 Low Hazard BS 5852 : 2006 Section 4 Ignition Source 5 BS 7176 : 2007 Medium Hazard <i>Note: Flammability performance is dependent on foam used</i>
Maintenance:	Washable to 60°C. Vacuum regularly. Wipe clean with a damp cloth or shampoo using proprietary upholstery shampoo.
Colour Matching:	Batch to batch variations in shade may occur within commercial tolerances

## 24/7+

Composition:	100% Recycled Polyester FR
Weight:	310g/m <sup>2</sup> ±5% (435g/lin.m. ±5%)
Abrasion Resistance:	500,000 cycles (800g / 12Kpa) Martindale
Flammability:	BS EN 1021 - 1 :2006 (cigarette) BS EN 1021 - 2 : 2006 (match) BS 7176 : 2007 Low Hazard BS 5852 : 2006 Section 4 Ignition Source 5 BS 7176 : 2007 Medium Hazard <i>Note: Flammability performance is dependent on foam used</i>
Maintenance:	Washable to 60°C. Vacuum regularly. Wipe clean with a damp cloth or shampoo using proprietary upholstery shampoo.
Colour Matching:	Batch to batch variations in shade may occur within commercial tolerances

## KOB Storm

Composition:	55% Nylon, 27% Viscose, 18% Wool
Weight:	342g/m <sup>2</sup> ±5% (460g/lin.m. ±5%)
Width:	135cm ±2% Usable
Abrasion Resistance:	200,000 cycles (800g / 12Kpa) Martindale
Flammability:	FMVSS 302 BS EN 1021 - 1 : 2006 (cigarette) BS EN 1021 - 2 : 2006 (match) BS 7176 : 2007 Low Hazard <i>Note: Flammability performance is dependent on foam used</i>
Maintenance:	Vacuum regularly and wipe clean with a damp cloth. Generally ex-stock. Custom colours available.
Colour Matching:	Batch to batch variations in shade may occur within commercial tolerances

fabrics by  
**camira**

## Urban<sup>plus</sup>

Composition:	100% Recycled Polyester FR
Weight:	320g/m <sup>2</sup> ±5% (450g/lin.m. ±5%)
Abrasion Resistance:	100,000 cycles (800g / 12Kpa) Martindale
Flammability:	BS EN 1021 - 1 :2006 (cigarette) BS EN 1021 - 2 : 2006 (match) BS 7176 : 2007 Low Hazard BS 5852 : 2006 Section 4 Ignition Source 5 BS 7176 : 2007 Medium Hazard <i>Note: Flammability performance is dependent on foam used</i>
Maintenance:	Washable to 60°C. Vacuum regularly. Wipe clean with a damp cloth or shampoo using proprietary upholstery shampoo.
Colour Matching:	Batch to batch variations in shade may occur within commercial tolerances

## Vintage Leather

Composition:	100% Leather
Origin:	Western European Bull Hides
Thickness:	approx. 1.15mm
Width:	Hide sizes are a minimum of 5m <sup>2</sup>
Abrasion Resistance:	150,000 cycles (BS EN ISO 5402 2002)
Flammability:	BS EN 1021 - 1 : 2006 (cigarette) BS EN 1021 - 2 : 2006 (match) BS 7176 : 2007 Low Hazard <i>Note: Flammability performance is dependent on foam used</i>
Maintenance:	Wipe clean with a damp cloth. For more specific information, please contact Technical Services.
Colour Matching:	Batch to batch variations in shade may occur within commercial tolerances



Second Nature is the eco-brand of fabrics from Camira. Xtreme<sup>plus</sup> and Urban<sup>plus</sup> are made from 100% recycled polyester saving virgin raw materials, reducing waste to landfill and minimising our damage to the environment. Life Cycle Assessment has confirmed significant environmental improvements of recycled polyester compared to virgin polyester.

Made using sustainable manufacturing techniques, including green electricity, comprehensive energy and effluent management, Second Nature fabrics leave a lighter environmental footprint.